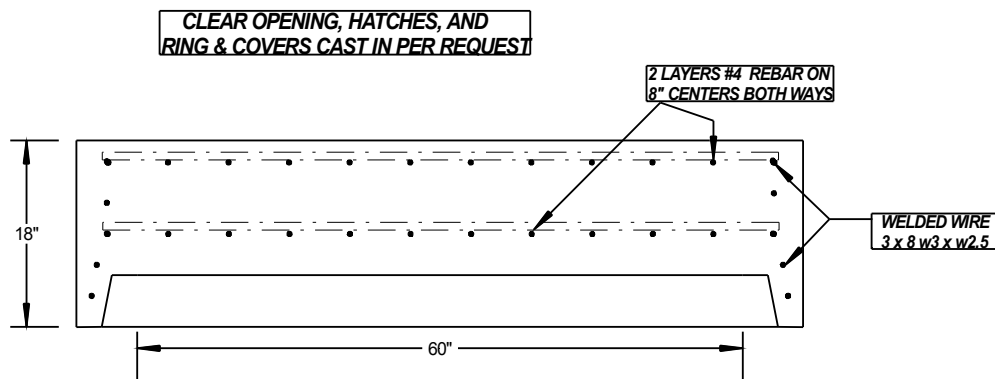


STANDARD 60" MANHOLE FLATLID SECTION



MEETS OR EXCEEDS ASTM C478
---4000 # REINFORCED CONCRETE IN 28 DAYS

H2O LOAD RATING

DATE: 8/10/09

SCALE: 3/8" = 1'

TYLER PRODUCTS SALES, INC.
TPS

PRE-CAST CONCRETE PRODUCTS

www.tylerproductsales.com

PH. 903-593-8633

FAX 903-593-8862