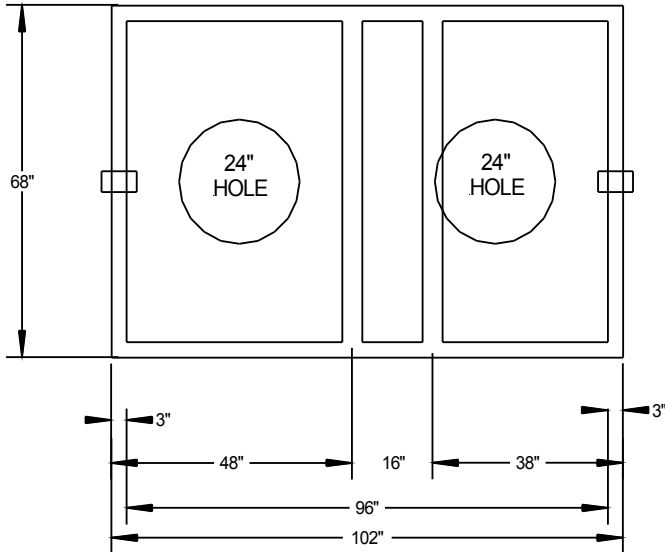
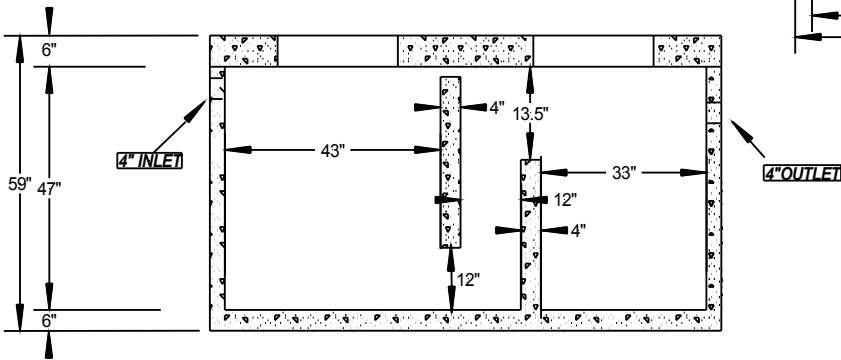
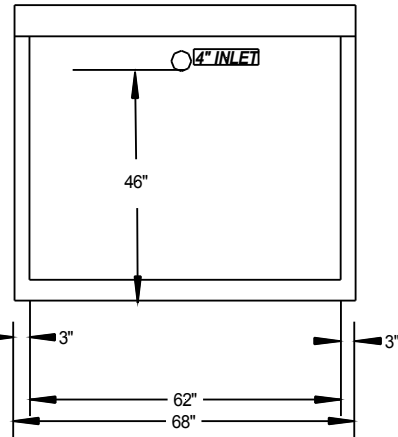
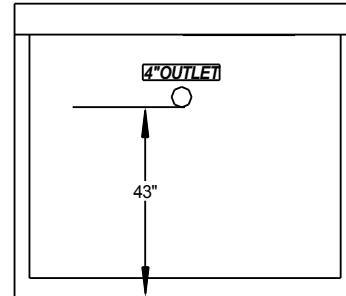


750 GI

LID VIEW



OUTLET VIEW



SIDE VIEW

MFG. PER ASTM C478-5000# REINFORCED CONCRETE IN 28 DAYS
PROJECT NAME: 750 GI
DATE: 9/18/09
SCALE: NOT TO SCALE
APPROX. WEIGHT 8500 LBS
DETAILS: INTERIOR PVC PLUMBING
TO BE SUPPLIED BY
CONTRACTOR.

TYLER PRODUCTS SALES, INC.
TPS

PRE-CAST CONCRETE PRODUCTS

www.tylerproductsales.com

PH. 903-593-8633

FAX 903-593-8862