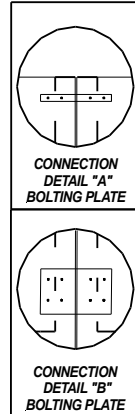
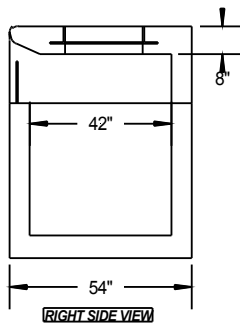


# SPECIAL CURB INLET

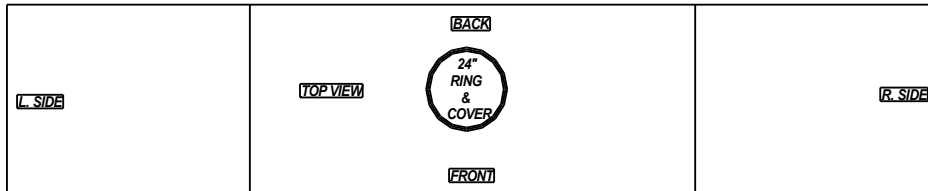
ALL JOINTS TO  
BE TONGUE & GROVE

FLOOR---1 LAYER #4 BARS 9" O.C.  
WALLS---1 LAYER #4 BARS 12" O.C.  
TOP---1 LAYER #4 BARS 9" O.C.

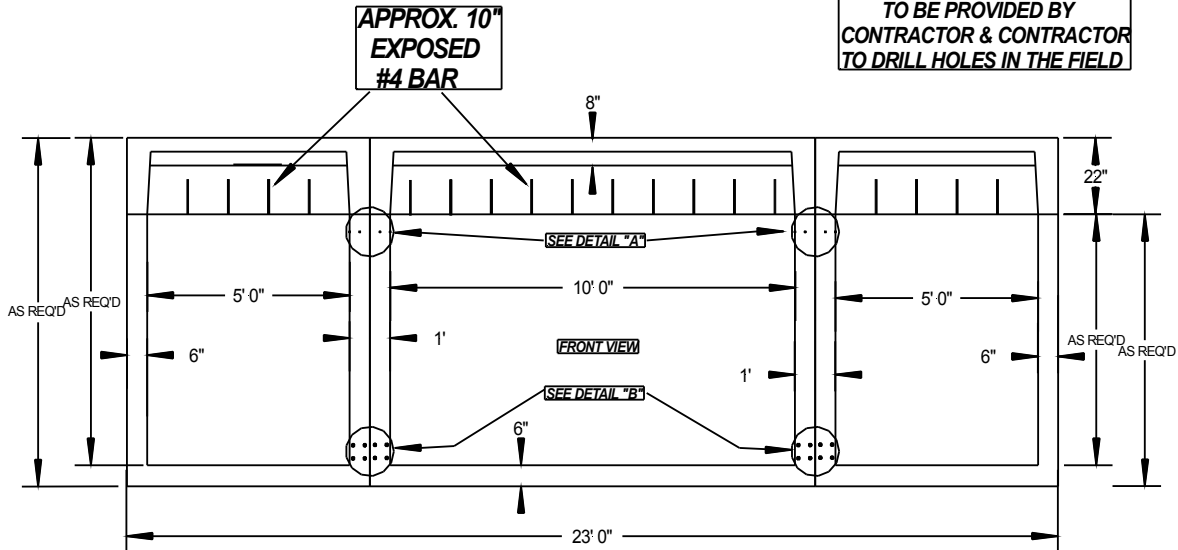


15' OR 20' INLETS BUILT IN  
THIS CONFIGURATION. CAN  
ALSO BE BUILT W/ 2-10'  
CURB INLETS SET END TO END

HOLES AS NEEDED



BOLTING PLATES & BOLTS  
TO BE PROVIDED BY  
CONTRACTOR & CONTRACTOR  
TO DRILL HOLES IN THE FIELD



MFG. PER ASTM C478-4000# REINFORCED CONCRETE IN 28 DAYS  
PROJECT NAME:  
DATE: 1/3/08  
SCALE: NOT TO SCALE  
DETAILS:

TYLER PRODUCTS SALES, INC.

# TPS

PRE-CAST CONCRETE PRODUCTS

www.tylerproductssales.com

PH. 903-593-8633

FAX 903-593-8862